



QLEX-NEC-250

## PRODUCT SPECIFICATION

QLEX-NEC-250

**Materials** Side cover-Al, Lens-PC, Bracket-Al**Ambient operating temperature**

-20°C ≤ Tamb ≤ +40°C (INTERTEK-NRTL)

-40°C ≤ Tamb ≤ +60°C (IECEX)

**Explosion protection rating**

Class I, Division 2 Groups ABCD T6




Class I, Zone 1, AEx db IIC T6 Gb

Ex db IIC T6 Gb

**Protection rating** IP66/67**Certificates** INTERTEK(NRTL), IECEX, CE**Cable entry** 1/2" NPT

- Explosion proof LED luminaires/work light designed for use in explosive gas environments with Ex d IIC rating
- Enhanced durability with aluminum housing and polycarbonate lens tube
- Slim and compact structure realize aesthetically pleasing design
- Semi-permanent service life with long-lasting LED light source
- Features special structure that allows to adjust light angle by turning the light tube

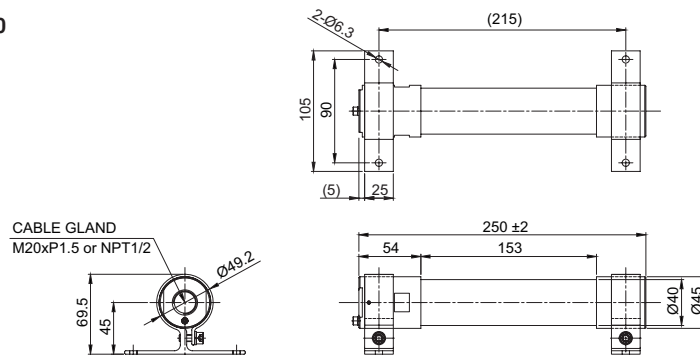
### QLEX-NEC-250 Explosion Proof LED Luminaires/Work Light

Optics Specifications	
Model	QLEX-NEC-250
Directions	Translucent
Light color	Cooldaylight
Color temperature	6,000-7,000K
Illumination(at 1m)	310Lux
Specifications	
Model	QLEX-NEC-250
Voltage	DC24V
Range for operation voltage	DC21.6V-26.4V
Power consumption	8.6W
Insulation resistance	Min. 100MΩ(500V DC mega ohm meter)
Withstanding voltage	DC:500V AC, 60Hz, 1minute
Protection rating	IP66/67
Materials	Side cover-Al, Lens-PC, Bracket-Al
Certifications	  
Weight(Approx.)	0.50Kg

### Technical Diagram

Units: mm

QLEX-NEC-250



### Ordering Specification

QLEX-NEC	-	250	-	24	-	INTERTEK(NRTL)
[Model number]		[Product length]		[Voltage]		[Certificates]
QLEX-NEC		250-250mm		24-DC24V		INTERTEK(NRTL) IECEX

### Cautions in use

- Contact structure of an explosion proof product must be a qualified part we provide. Please do not disassemble, assemble, modify or repair arbitrarily.
- Explosion proof cable gland attached type available (Standard type does not provide explosion proof cable gland)
- Cable entry 1/2" NPT